

Design Project Module 3

Course structure and methodology

AR 0305

COURSE OBJECTIVE

To understand traditional approaches to built forms responding to the culture, climate and the terrain and interpret them architecturally in a contemporary context. Studio deals with socio-cultural aspects of space making, body and its relation to its surrounding and ideas of perception. The intend is to perceive space through understanding of place making, reading of program and meaning of elements.

LEARNING OUTCOME

Develop the drawings as a design tool to highlighting the role of built form as a reflection of factors of context, program and learnings from identity of place. It involves developing of the conceptual idea into a detail design integrating the learnings from the analysis to individualistic interpretations. Representational techniques developed to communicate intent of design approach and it becoming an integral part of the design process.

STUDIO CONCERNS:

- “Place” and its relation to Space making process
- Envelop and its role in defining space and form
- Public and private in reference to spatial relationship with respect to users
- Workability and efficiency of space in relation to spatial organization
- Sense of boundary and its significance towards defining space
- Scale, order and proportion in relation to diversity of components of existential space
- Role of Kinesthetic aspects of space, bodily relation with space
- Meaning through traditional elements and its interpretation

Text books/ Reference books:

1. Genius Loci, Christian Norberg-Schulz
2. Existential Space, Christian Norberg-Schulz
3. The production of space, Henri Lefebvre
4. Body Memory And Architecture, Kenr C. Bloomer and Charles W. Moore
5. Architecture Without Architects, Bernard Rudofsky
6. Form Space And Order, Frank Ching
7. Concepts of space in traditional Indian architecture, Yatin Pandya
8. Elements of space making, Yatin Pandya
9. Atmospheres: Architectural Environments, Surrounding Objects, by Peter Zumthor
10. LIVED-SPACE, by O. F. Bollnow
11. House form and culture, by Amos Rapoport

Impact of such topics will be discussed through aspects of:

- Surrounding, Ground and Plinth, responding through alterations with respect to the given topography and the physical constraints of site.
- Basic Elements of space, looking at the meaning of them and impact on space making
- Enclosure as a medium to define certain characteristics of space in relation to its openness, use and relationship with adjacent spaces. Through these one gets into ideas of interconnectivity, degree to which one space opens to another. This goes further towards defining nature of Openings.
- Space in-between (transitional space), the character boundaries which defines the beginning and end
- Circulation / Movement , notional expressions that space inherits in relation to the how one would move through space, emphasizing on the visual parameters
- Mass / Void, with respect to organization of elements and formal expression
- Shadow / Light, with respect to quality of space and need for natural light as per the program
- Structure / Material, with respect to organization of elements and formal expression
- Climate and its impact
- Atmosphere and components of it which define character of space

The following factors are addressed while addressing complexity of a particular place:

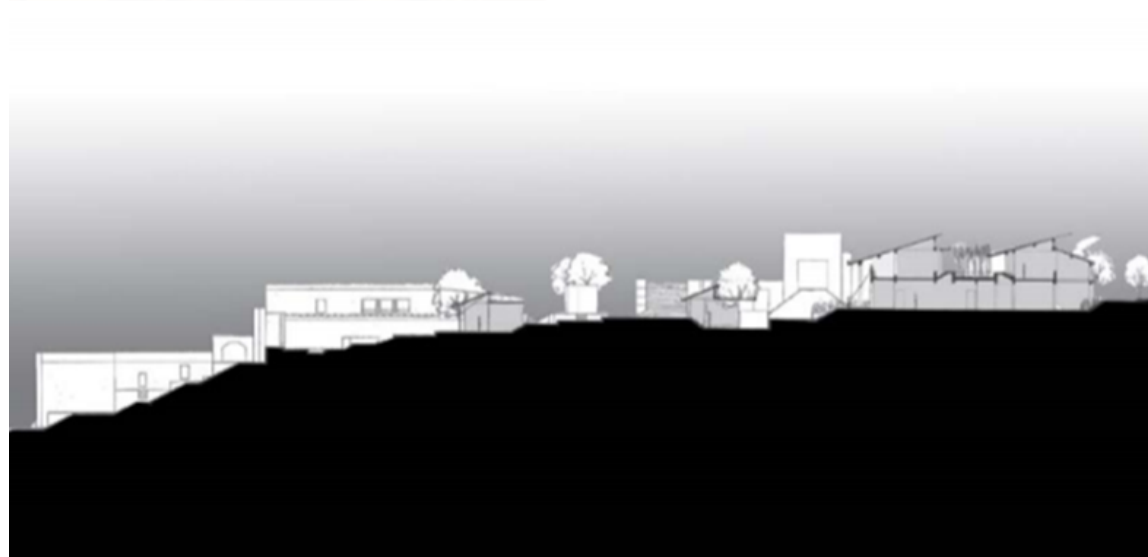
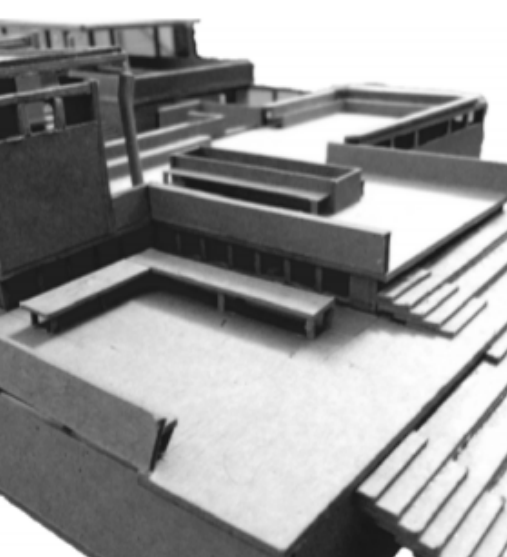
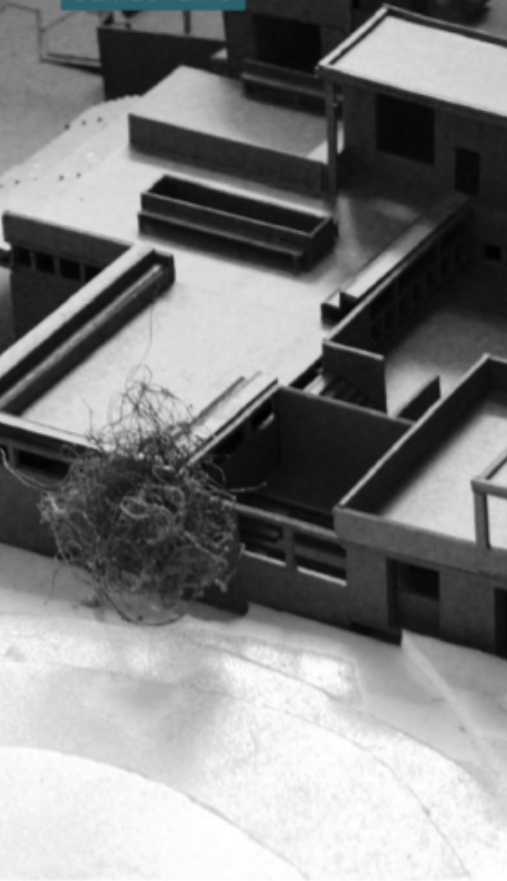
- Historical context and its significance
- A preexisting underlying layer of sense of community
- Understanding of socio-cultural background
- Complexities that evolved due to change through time
- Existing traditional local arts, craft and vernacular houseforms, their interpretations
- Tradition and its imprint in present time, resilience and adaptations at present condition

Understanding the local traditions and how it influenced the built forms with emphasis on:

- Materials and construction
- Structure
- Built -open relationship
- Architectural elements
- Activity patterns of the people
- Reflection of surrounding and its impact on such built form

The studio Process contains:

- Exercises for conceptual drawing of design resolution, Process as a method to integrate and emphasize meaning to use of elements. Progression of process through model making.
- Transition from abstract ideas to design resolution through identification of characters and methods. The change in medium helps in realization of such change.
- Diverse ways in which design approach, using examples and case studies for ease of understanding.
- Dwelling on the program and understanding the requirements of space. Space making and its implication on form. Through writing ones interpretation, he/ she develops the character of space.
- Critical thinking and research towards the given aspects of a particular situation, concluding from a rational point and representing them. Collages and story boards as a medium to communicate such ideas.
- Discussions as a medium to nurture questioning and sharing of ideas.



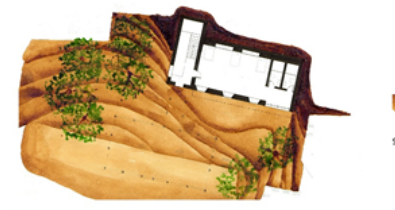
Examples of exercises done by students:



PLAN A



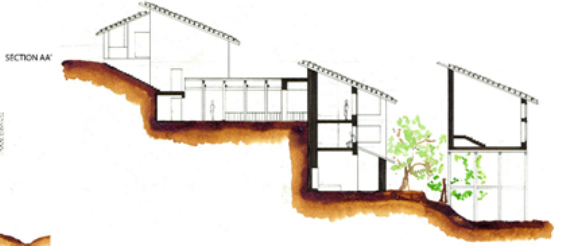
PLAN D



PLAN E



IDEA, Indus University
STUDIO III
 Dharamsala
 Himachal Pradesh



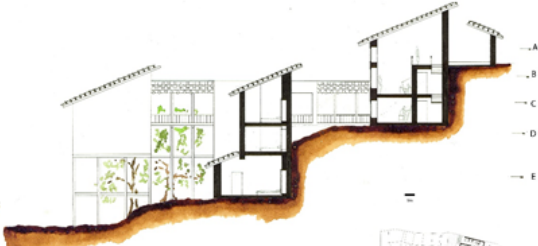
SECTION AA



SECTION BB



SECTION DD



SECTION CC



KEY PLAN

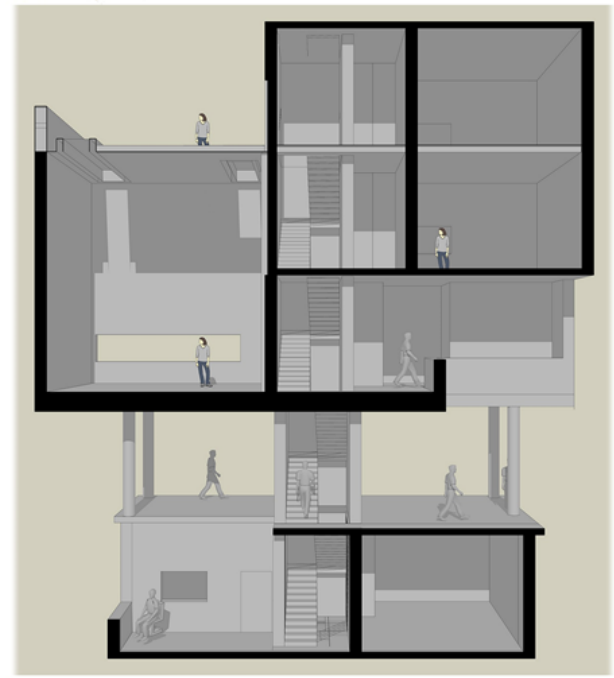
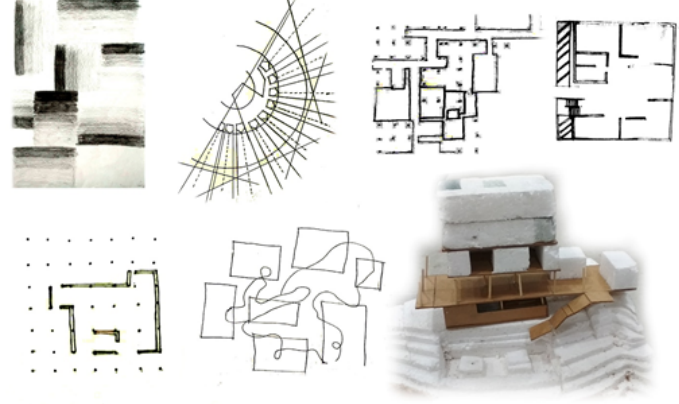
Uzair Jirwala
 IJ174300009

In this studio program my intent was to create this subconscious ambiguity of whether one is inside or outside the space which has been primarily done by providing visual connection. The openings have been made in such a way that the sill is as low as 50mm and the lintel of the opening is high as the ceiling of the room. And as the walls are thick so the sill becomes a place for the user to sit and enjoy the view. The bridge which seems outside the building is actually the corridor of the building creating the intended ambiguity.

Facilities: Vishal Chugh, Ananya Bhattacharyya, Dhanraj Singh Rana



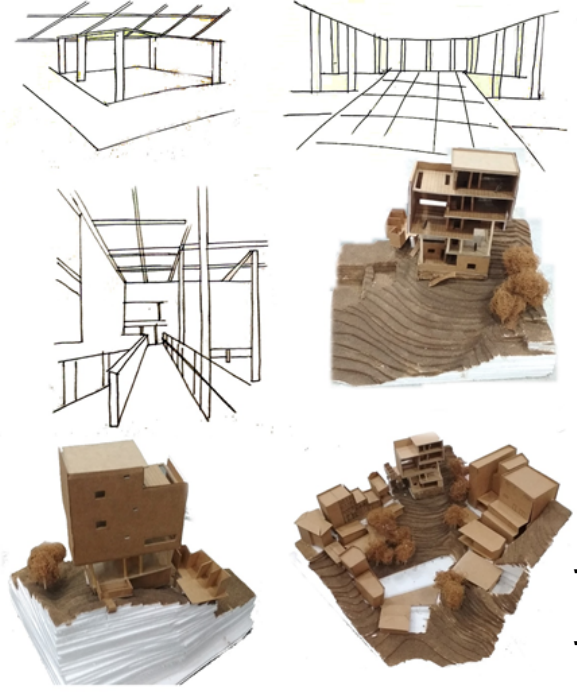
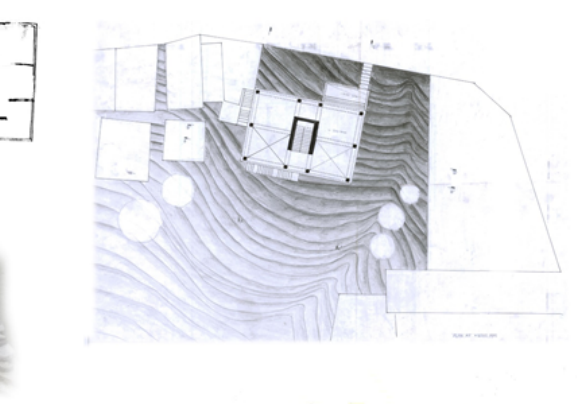
December 10, 2018



IDEA, Indus University
STUDIO III
 Dharamsala
 Himachal Pradesh

Shreetha Subagya
 IJ174300012

Facilities: Vishal Chugh, Ananya Bhattacharyya, Dhanraj Singh Rana

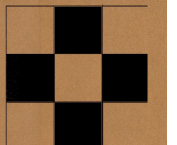
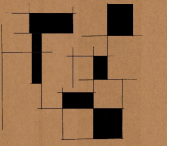
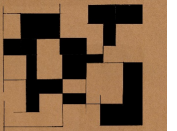
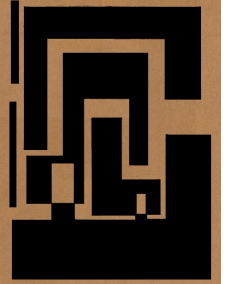
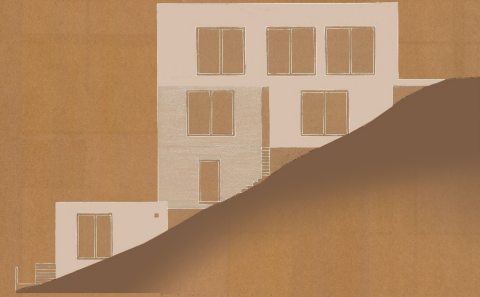
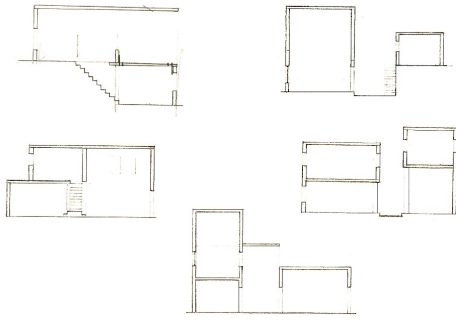
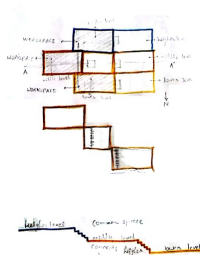
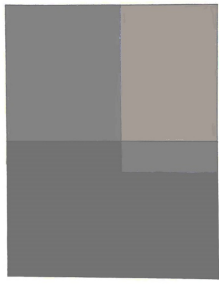


My intent is to create free movement, every floor give a flexibility to move any side to create a outside there are a huge solid cuboid but when go to inside there are a void space to create a different type of experience. there are two different building is above and below is hold together with the free movement floor the vertical circulation is also give a connection to the different space. free movement is also create a experience of approach the building is below or road level, it give a nice experience.

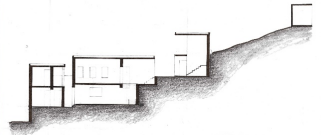
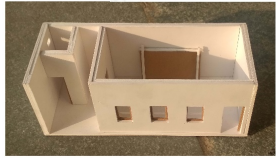
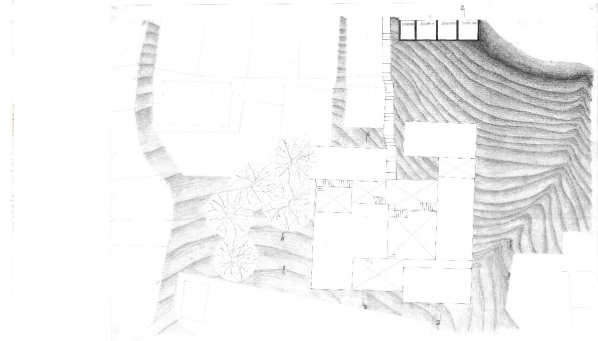
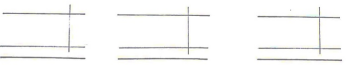


December 10, 2018

Examples of exercises done by students:



Examples of exercises done by students:



December 10, 2018

Bhruvi Shah
131743000028

The main intent is to put every spaces at different levels according to their functions and connection between every spaces. So in my design if one can see it from outside then there are four different modules but it is interlocked from inside. There is a central space which is a common space and many activities can happen there. All the spaces are connected physically or visually with each other.

Faculty: Vishal Chocger Anaya Bhattacharyya Dhyanjyoti Paria

IDEA, Indus University
STUDIO III
Dharamsala
Himachal Pradesh