

Institute of Design Environment and Architecture - Architecture Department

Course Content Semester 8

Design Project Module 8

One encounters a degree of complexity while addressing to particular situation. The degree is somewhat directly proportional to the number of layers that come together to form that situation or a part of it. While dealing with them one tries to find traces which leads to deduction (to the extend it is possible) of their meaning and significance in contemporary time. Medieval cities like Jaisalmer, do come with a baggage of such layers, overlapping through time, getting manifested through built environment. The intent of the studio is to enquire upon such condition, understand its nature and respond through the language of architecture.

“When confronted with an urbanist program, an architect may ether assign a masterly construction, Take what exists, fill in the gaps, deconstruct what exists by critical analysis or search for an intermediary-an abstract system” - Bernard Tshumi- Cinegramme Folie

Through the studio process one tries to explore appropriate ways and means to insert in a fabric of the city of Jaisalmer. Through studies of historic layers, understanding evolutionary patterns, supporting studies through documentation, etc., the studio tries to look at different forces acting upon such patterns of the city. With studies of fragments, students tried to understand the relationship of whole to part, the interdependency of elements and house forms to scale of city and its formation. As a part of the studio certain question in relation to the present condition, and the factors that govern growth of such cities were brought to light.

The studio Process had mainly three departure points:

1. Conclusion to analysis
2. Respond towards urbanity
3. Site response and the program

Through the process students had tried to respond to the factors in different ways, in certain cases prioritizing one over the other. In the process the students have tried to look towards developing their idea, using references to create better understanding and communicate such ideas through drawings and model.

Site Drawings- Larger Site Context



Site Terrace Level Plan



Urban Grain Plan



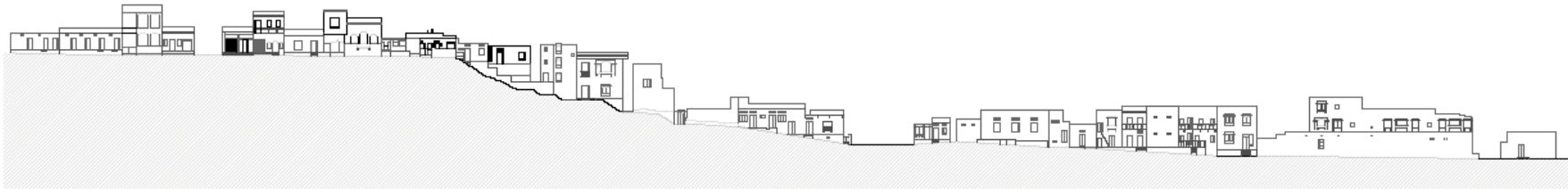
Circulation Plan



Activity Mapping Plan



ELEVATION AA



ELEVATION BB



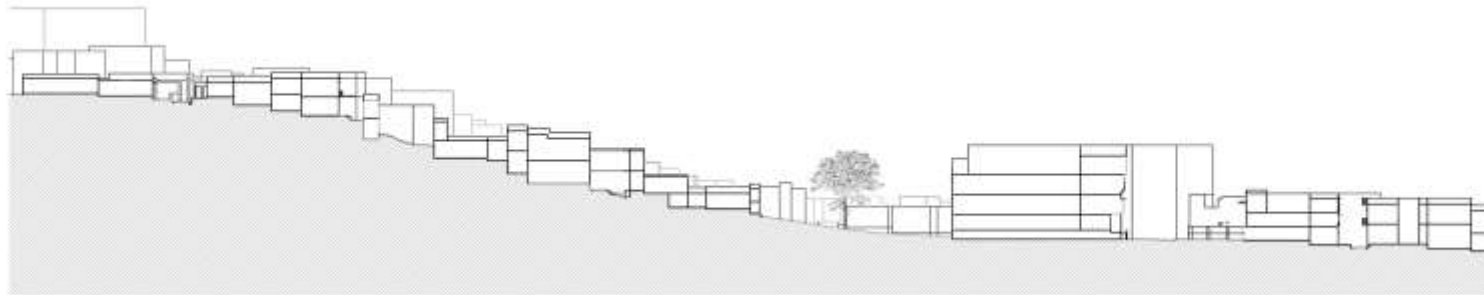
ELEVATION CC



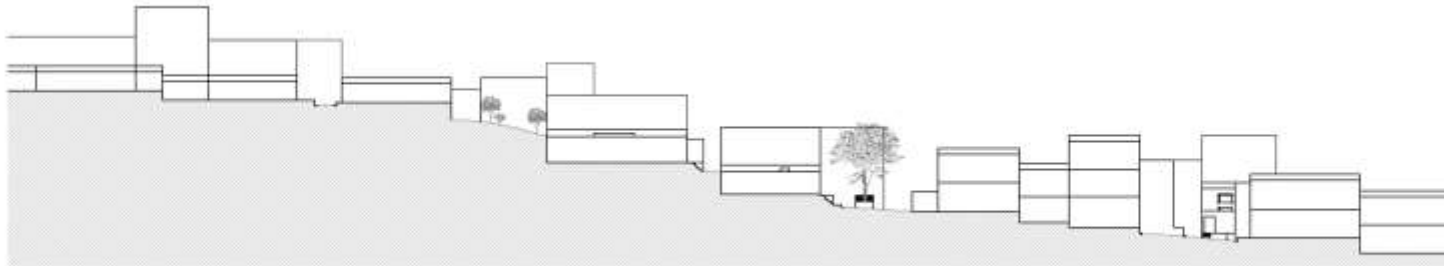
ELEVATION DD

SEM-8 URBAN INSERT, JAISALMER
ELEVATIONS SCALE - 1:200

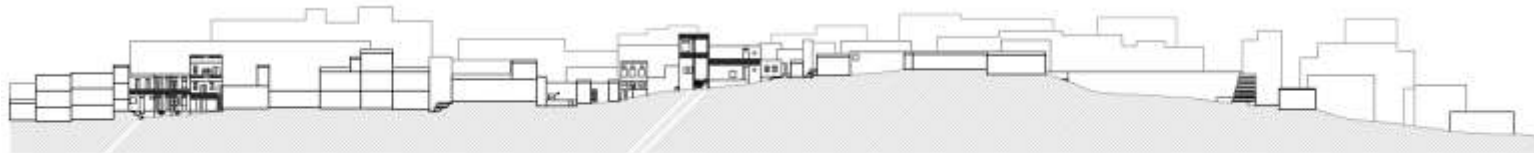
Site Elevations



SECTION AA'



SECTION BB'



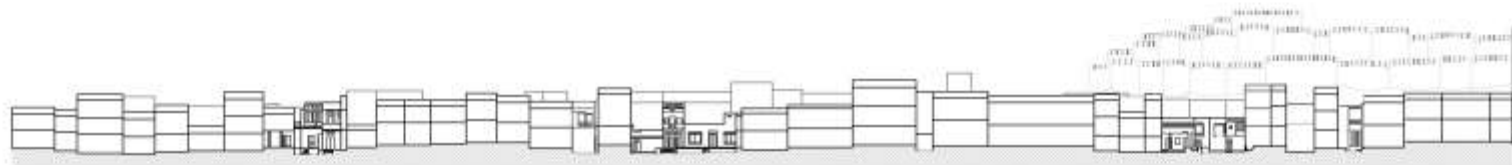
SECTION CC'

SEM-8 URBAN INSERT, JAISALMER
SECTIONS SCALE = 1:300

Site Sections



SECTION DD'

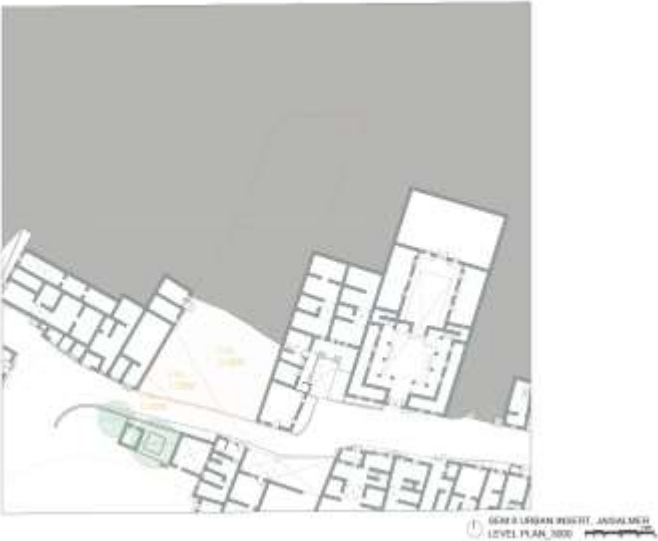


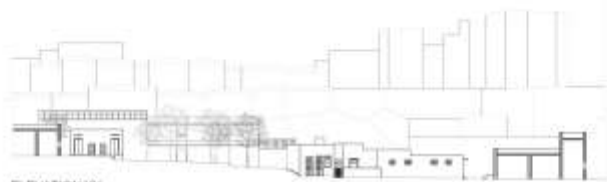
SECTION EE'

SEM-8 URBAN INSERT, JAISALMER
SECTIONS SCALE = 1:300

Site Sections

Site Drawings- Immediate Site Context



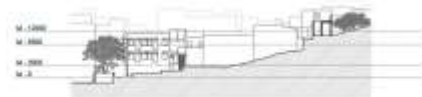


ELEVATION YY



ELEVATION XX

SEMI-URBAN INSERT, AUSTALHEI
SITE ELEVATIONS SCALE 1:300



SECTION 01



SECTION 02



SECTION 03



SECTION 04



SECTION 05

SEMI-URBAN INSERT, AUSTALHEI
SITE SECTIONS SCALE 1:300

Studio Project Program

The basic derivation of the program was from the concern- who should we built for, to whom should it belong to as a response to the present scenario of urbanity in such Historic cities like Jaisalmer. The core of the program is built on the importance of the small scale industries that play a vital role in the running parallel to the tourism economy for the city. These small scale industries aid the economic development of the city and also contribute to the socio-economic objectives of increasing income, providing employment opportunities. They require lesser financial investment, lower levels of technical expertise and lesser managerial skills. They promote the skills of the craftsmen and the traditional practices. The main focus would be on the predominant textile industry (cotton, wool, glass work, embroidery, etc.) in Jaisalmer, along with other industries like leather product making, stone work and carpentry work etc. Adequate amount of area of the workspaces should be used for storage of materials, supplies, and other technical equipment.

Along with the core function of the small-scale industry, the program will also include an educational centre. It shall be set in a multi-purpose hall needs be designed for a size of approximately 20 students, with the possibility for spaces that can be added and modified depending on nature of the learning activities and infrastructure required.

Adaptability of spaces as per different usability and time is a factor that should be well thought by students. Any kind of addition or subtraction of other programs with sufficient reasoning is encouraged as per individual interpretations, provided it doesn't shift the basic concern or intend of the organization/body. Suitable infrastructural facilities shall be provided for the functions for their efficient working:

Thus the program includes 3 functions:

1. Small-scale Industry:

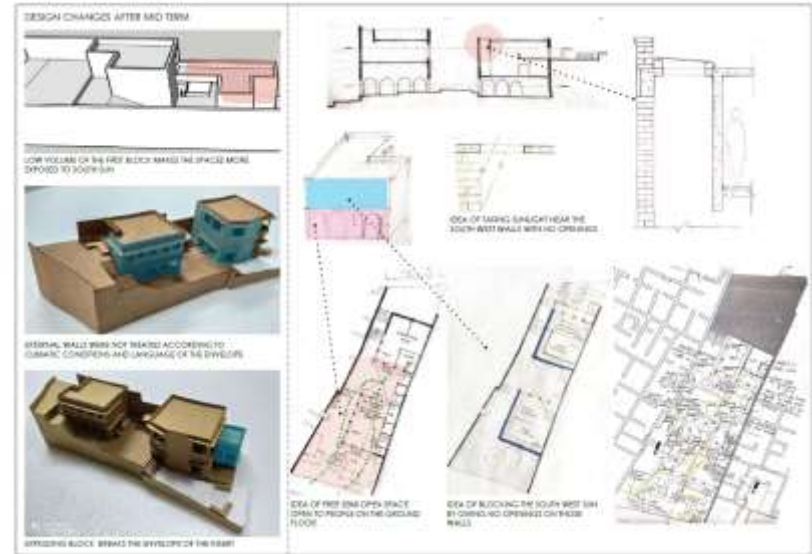
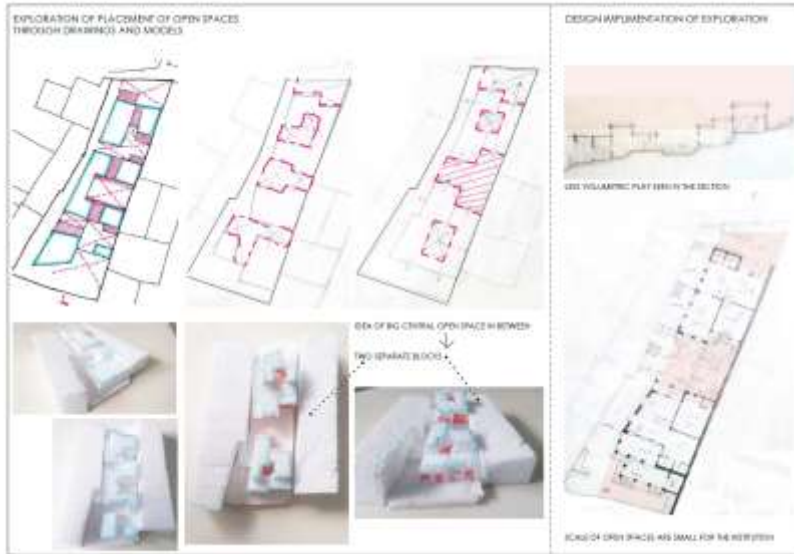
- 6 units of independent work spaces for functions as mentioned (leather product making, stone work and carpentry work etc.)
- 1 common space with an area where small household products can be made by 4 groups with 2-3 individuals in each.
- Infrastructure and services for the above.

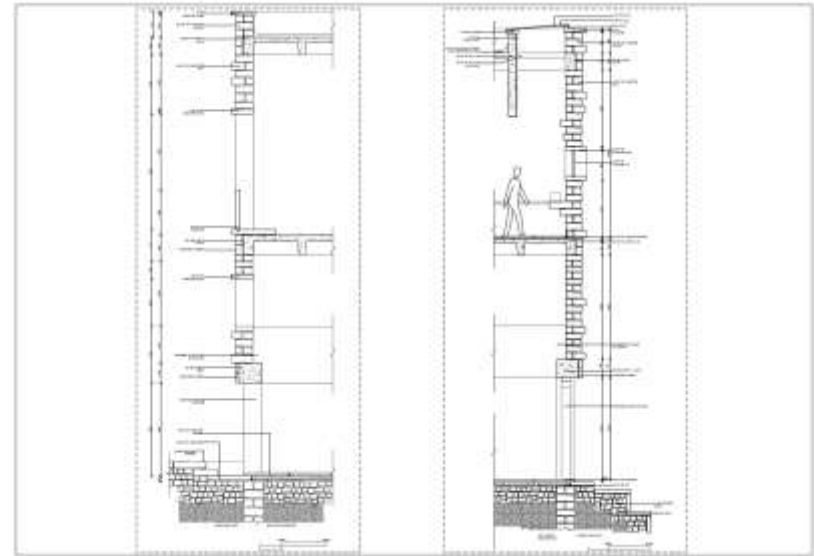
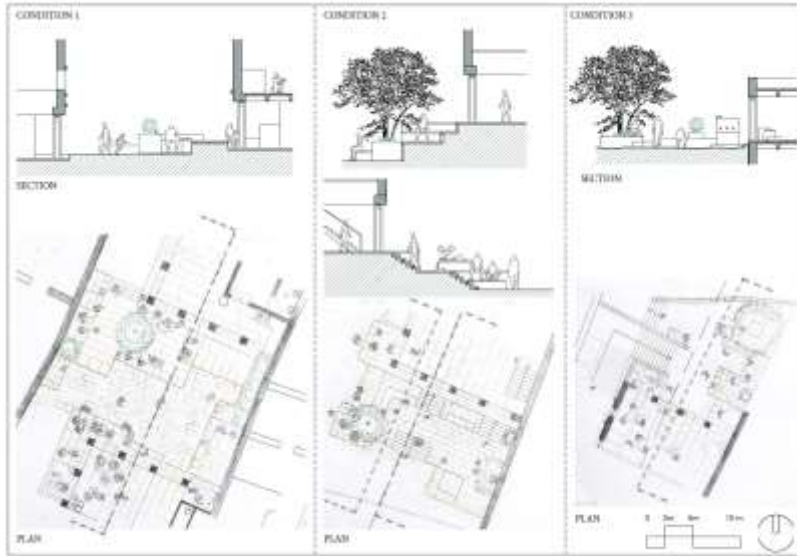
2. Educational Centre:

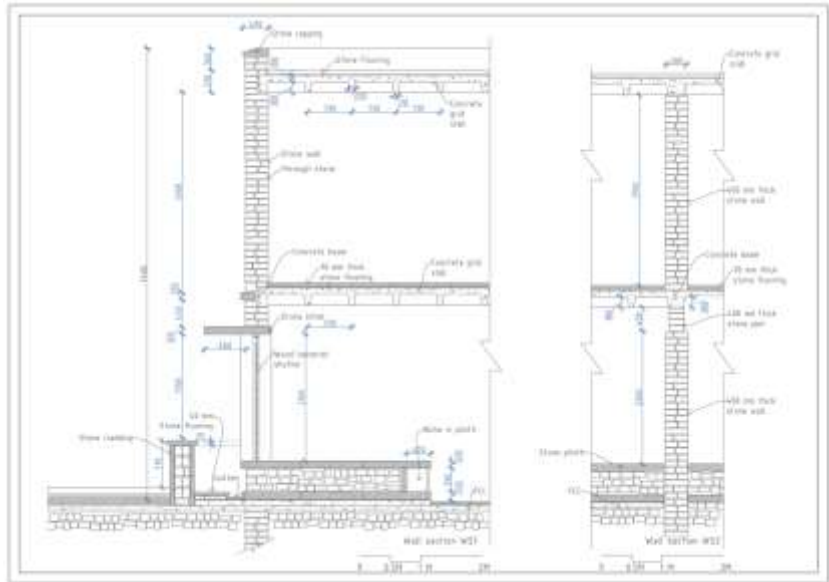
- Area to conduct classes with 20 children– should be able to accommodate multiple groups as required (space should be adaptable to other activities such as art and craft class, music classes).
- Infrastructure and services for the above.

3. Healthcare Centre:

- A small clinic rented to two physicians who practice there three days a week at different intervals. It will be supported by a waiting area for 4-5 people and supporting staff.
- Infrastructure and services for the above.







Initial Process and Iterations done from translating the line to design

BASE PLAN **ALL LEVEL PLAN 1** **ALL LEVEL PLAN 2**

PROCESS DIRECTIVES

1. ACCEPTANCE AND REFINEMENT
2. TOP FLOOR INTERFACES
3. MATERIAL AND APPROPRIATE SYSTEMS AND WALLS
4. STORAGE AND WORKSPACES
5. ATRIUM
6. ADAPTABILITY AND FLEXIBILITY
7. MATERIALS
8. GREEN SPACES
9. COMMUNITARIAN AND TERTIARY WORKSPACES
10. LANDSCAPING
11. WELL-COORDINATED SCALE
12. COHERENT PRODUCTION THROUGH SCALE

Started playing with the volume along the corners. Working along the line along the line to guide the corner. Enhancing the line through the space. A view into how the line is considered.

DESIGN OF THE URBAN INSERT

Plan from Level 2000 **Ground floor Plan** **First floor Plan**

EXPLORATION OF THE DESIGN THROUGH ARCHITECTURE

SECTION A-A' **SECTION B-B'**

Developing on the nature of lines into the site. Developing on to the density of the building and where along the line do Keyward form dominance.

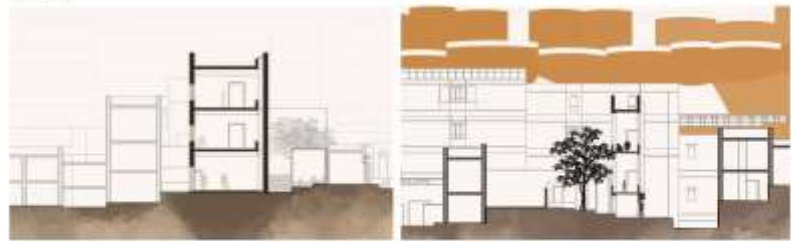
Conceptual sketch of the wall along the dominant axis to be preserved on. Sketch of the section showing the line reflect the built.

The dominant axis being captured along on worked.

First floor Plan **Second Floor plan**

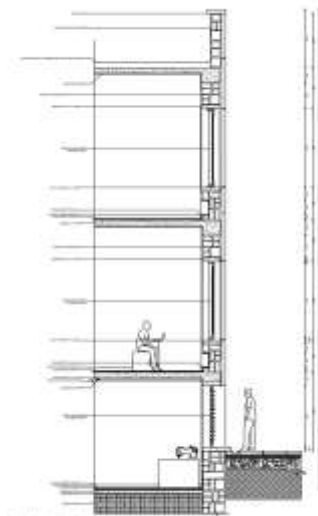


Section AA'

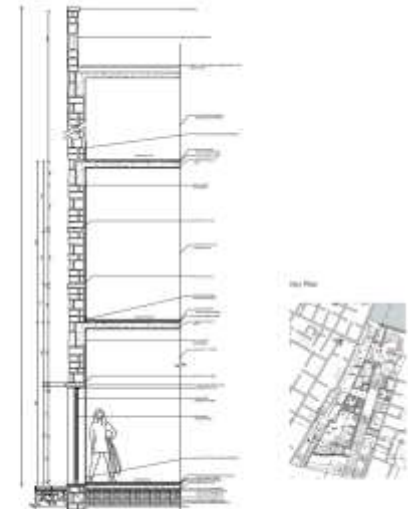


Section BB'

Section CC'



Wall section A



Wall section B

Manifestation of Outdoor spaces



The Entrance and it's Nature



The Intermediate Open space



The tertiary street and opening in response to the terrain



Manifestation of the line along the site



