

Skill Module 3

Course structure and methodology

COURSE OBJECTIVE

Observing and analyzing the role of climate and culture plays in deciding the form of select elements in a houseform, temples and the street. To document intangible cultural aspects of the community and explore different ways people use these houses, temples the street. Presentation of case-studies and models of large scale replicas.

CONTENT FOR THE MODULE

Representation of the documentation to distinguish different layers representing the socio-cultural practices of a place. Through use of different modes and mediums of representation students try to identify and analyze built environment.

LEARNING OUTCOME

Students will have better ability for observation and analysis for understanding how architecture integrates with cultural practices. Through the study they will develop ideas of how a built environment adapts to different conditions and constrains. Apart from that they also learn to use representational techniques to communicate ideas.

Text books/ Reference books:

1. Analysing Architecture, by Simon Unwin
2. Architecture: Form, Space, & Order, by Francis D. K. Ching
3. Rendering with Pen and Ink, by Robert W. Gill
4. Wreck This Journal: To Create is to Destroy, Now With Even More Ways to Wreck! Diary, by Keri Smith

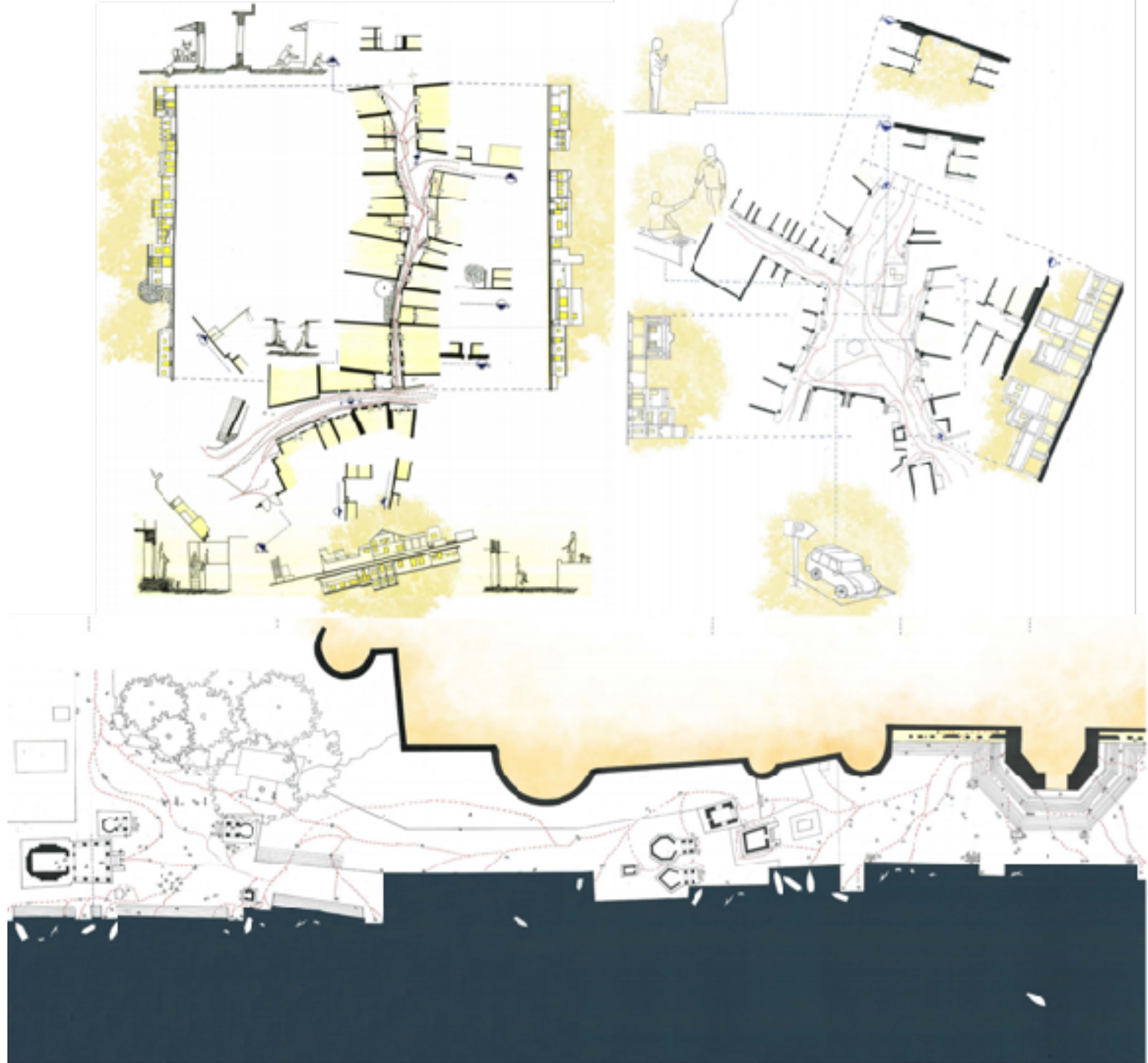
Topics covered:

- Identification of identity of spaces with respect to the use of it at different time periods.
- Through representation of mapping of activities understanding how elements work with respect to the context in which the space is situated.
- Dependency of different layers and the ways in which one effects space. Flexibility and adaptability of space.
- Elements and their significance in imparting meaning to space.

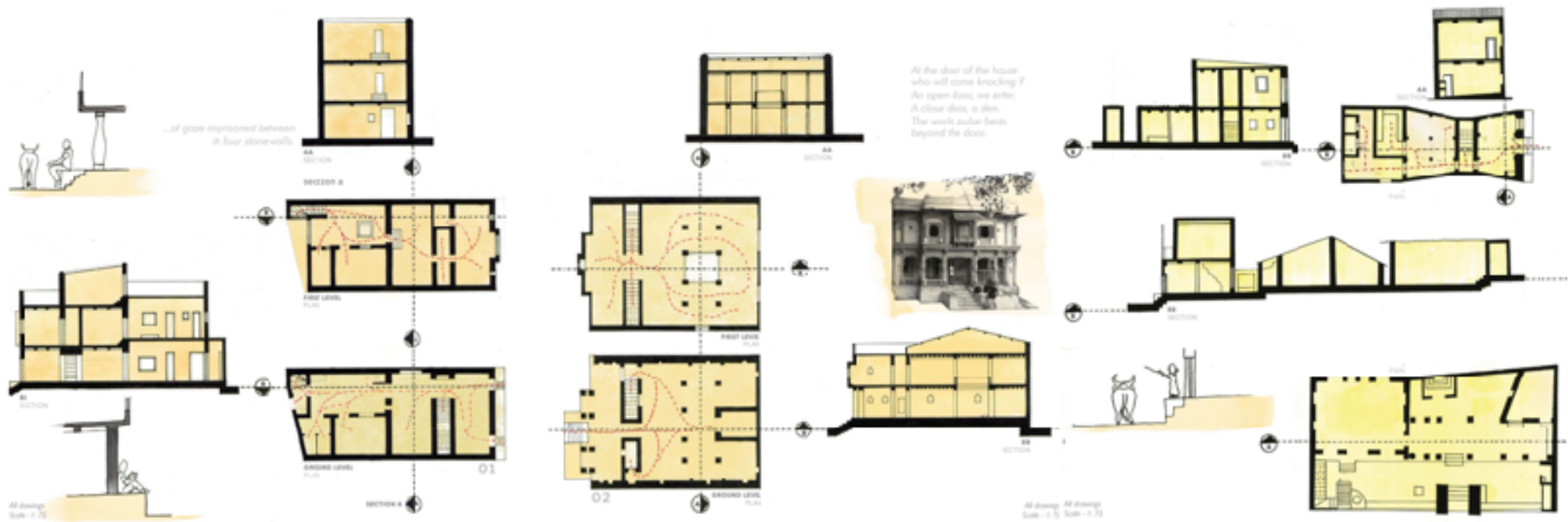
Exercises:

- Exercise 1: To observe and relate aspects of user to built- form and represent those through mediums of ink and pen. By concentration on one space students were trying to communicate characters of that through nature of use, manner in which people were using it, sense of boundary, activity, privacy etc.
- Exercise 2: Through questionnaires, groups of students tried to understand the socio-cultural factors that prevail in shaping the livelihood of people.
- Exercise 3: To represent the studied builtforms through different layers and understand role of elements.





Examples of exercises done by students:



Examples of exercises done by students: